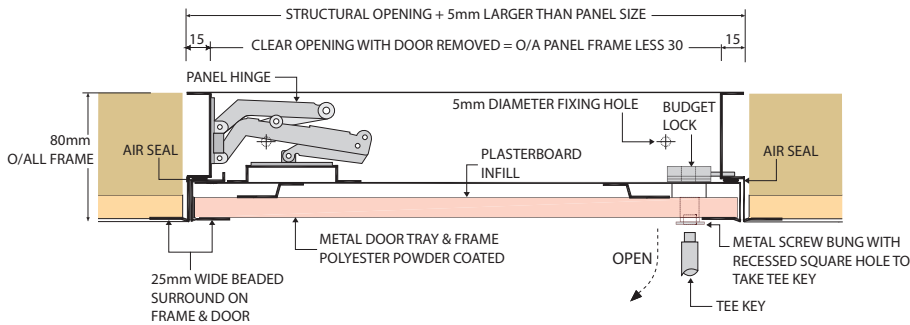
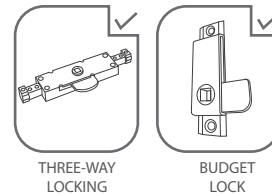


APD.PB.BF
CEILING/WALL ACCESS PANEL - PLASTERBOARD FACED WITH CONCEALED BEADED FRAME


SPECIFICATION

DESCRIPTION	Plasterboard Faced - Concealed Beaded Frame.
FIRE RATING	Non Fire - Rated, made from wholly non-combustible materials.
HINGE TYPE	Panel Hinge.
COMPOSITION	Flush Plasterboard infill Faced Door. 1.2mm Thick Zintec Steel Perforated Frame. 0.9mm Thick Zintec Steel Door Tray with Plasterboard Infill. Polyester Powder Coated in matt white RAL 9010 20% gloss.
LOCKING	Budget Lock.
FITTING	Screw fix through the frame into a suitable trimming.
FRAME TYPE	Concealed beaded frame for taping and skimming on site.

LOCKING OPTIONS



DIMENSIONS

Please ensure that on installation of the access panel, the actual size of structural opening in the wall/ceiling needs to be 5mm larger than the overall panel size e.g. structural opening for 600 x 600 will be 605 x 605 (See sizes below).

Sizes		Structural Opening		Clear Opening with Door Removed		
(x)	(y)	(x)	(y)	(x)	(y)	
300	300	305	305	270	270	
450	450	455	455	420	420	
550	550	555	555	520	520	
600	600	605	605	570	576	
600	900	605	905	570	870	(Hinged long side)
600	1200	605	1205	570	1170	(Hinged long side)

Bespoke sizes are also available

FITTING INSTRUCTIONS

Note: the access panel may require extra support and bracing to allow safe operation.

- Insert frame into structural opening which needs to be 5mm larger than panel size, ensuring frame is flush with surface. Then screw fix through fixing points using 5 x 16mm fixing screws. Additional packers may be needed to prevent distortion of the frame. DO NOT fix through the face of frame.

- Simple to operate: remove the plastic plug, insert the Key into the budget lock and rotate 90 degrees. Ensure there is sufficient clearance for the lock to operate correctly.

- Access Panels with a perforated frame are designed for a wet finish. Scrim tape must be applied to all beaded edges prior to plastering. **IMPORTANT NOTE:** If scrim tape is not used the plaster may not adhere to the access panel's frame.